

Realm of Ethos

A Group Show Curated by Annapurna Madipadiga

galleryVEDā

4/22 Rutland Gate 5th Street (1st floor)

Nungambakkam | Chennai

Ph: 044 4309 0422 | info@galleryveda.com

www.galleryveda.com



PARTICIPATING ARTISTS

ANINDA SINGH

ANAND N DABLI

CHANDRAPAL PANJRE

DNYANESHWAR RANDHAI

NEERAJ YADAVA

KUMAR KRISHNA

KHANJAN MARU

RAJ CHOWDHURY

SWEETA RAI

SANGEETA KODIMYALA

YUVARAJ VELU



In the quiet corners of our hearts, stories unfold, weaving a tapestry of emotions that seek expression in the realm of the visual. This exhibition is a symphony of hues and textures, each piece a verse in the larger poem of human experience. Through the delicate layering of color and the intricate dance of light and shadow, our artists unveil a vocabulary rich in the echoes of the past and the whispers of the present.

These works are more than mere art; they are whispers of a bygone era, echoes of a home left behind, and the unspoken dreams of finding one's path. They are the intimate musings of souls navigating the labyrinth of existence, each stroke and hue a testament to their journey. Here, you will encounter the raw essence of pain, grief, joy, and triumph—emotions that transcend the boundaries of time and space, inviting you to find your own reflection within them.

Our artists, hailing from diverse corners of India, bring forth their unique visual languages—languages born from personal narratives and collective memories. In their hands, form transcends its traditional confines, becoming a fluid entity that breathes life into the formless. This is a space where boundaries blur and where art becomes an extension of the soul, resonating with the viewer's own experiences and emotions.

As you wander through this collection, let yourself be immersed in the stories etched into every canvas and every sculpture. Allow the colors to speak to you, the textures to draw you in, and the forms to guide you toward a deeper understanding of the human condition. This exhibition is not just a display of art but a dialogue—a conversation between the artist and the observer, the past and the present, the seen and the unseen.

Welcome to a journey through the visual spectrum of the heart, where art becomes a bridge to the innermost realms of our being. Here, you will find not only the stories of others but the threads of your narrative woven into the vibrant tapestry of human expression.

Annapurna Madipadiga
(Curator)

ANINDA SINGH

B 1982

Graduated Design NIFT in 2003.

Lives and works in Bangalore.

Aninda Singh's artistic practice explores the intricate relationship between humans and the natural world, focusing on the need to decolonize nature and challenge systemic extractive practices. By positioning her work at the intersection of art and ecology, Singh highlights environmental concerns while promoting a deeper connection with non-human life forms. Her art serves as a call to foster reciprocal relationships between humanity and the ecosystems we inhabit. Working primarily with natural materials like clay, Singh's creations emphasize sustainability and the importance of engaging with the earth in a mindful way. Her use of organic forms and textures reflects the beauty of nature while pointing to the fragility of ecosystems in the face of human interference. Through her choice of medium, Singh evokes the transformative processes of nature—growth, decay, and regeneration—mirroring the cyclical patterns that sustain life. Singh's work also functions as a form of environmental activism, urging climate-positive actions and inspiring viewers to reconsider their role in protecting the planet. Her art not only celebrates the diversity of life but also invites reflection on the consequences of overconsumption and industrialization. By doing so, she encourages a more thoughtful, symbiotic relationship between humans and the natural world.



ANINDA SINGH
FRAGILE - SCAPES 3
15" DIAMETRE INCHES
STONEWARE CLAY, OXIDE SLIPS L, ENGOBES
AND GLAZES, EPOXY MULTIPLE FIRINGS



ANINDA SINGH
FRAGILE - SCAPES 4
15" DIAMETRE INCHES
STONEWARE CLAY, OXIDE SLIPS L, ENGOBES
AND GLAZES, EPOXY MULTIPLE FIRINGS



ANINDA SINGH

FRAGILE - SCAPES 4

15" DIAMETRE INCHES

STONEWARE CLAY, OXIDE SLIPS L, ENGOBES

AND GLAZES, EPOXY MULTIPLE FIRINGS

NEERAJ YADAVA

B 1987

B.F.A. University of Allahabad (U.P), M.F.A. Kala Niketan Gwalior (M.P)

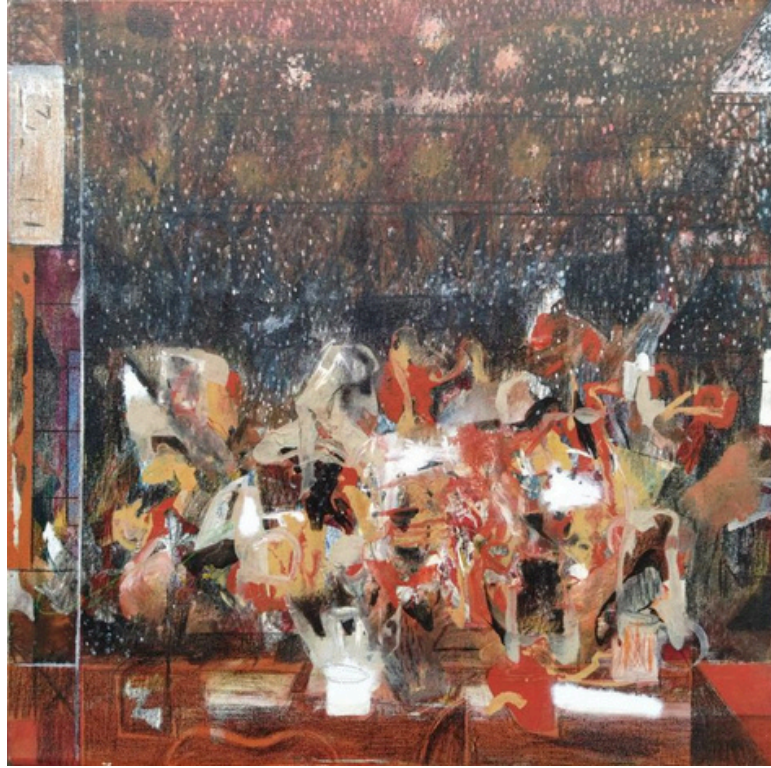
Lives and works in Ayodhya.

In their paintings, the artist enjoys creating new, imaginative forms and colors that evoke a secret world. This realm is difficult to explain through words; it can only be seen, felt, and experienced, bringing internal pleasure. The paintings are far removed from conventional stories and worldly thoughts, instead embodying a unique, imaginative, and creative universe. These works can't be easily described but serve as a gateway to the spiritual realm, offering a fleeting moment of transcendence.

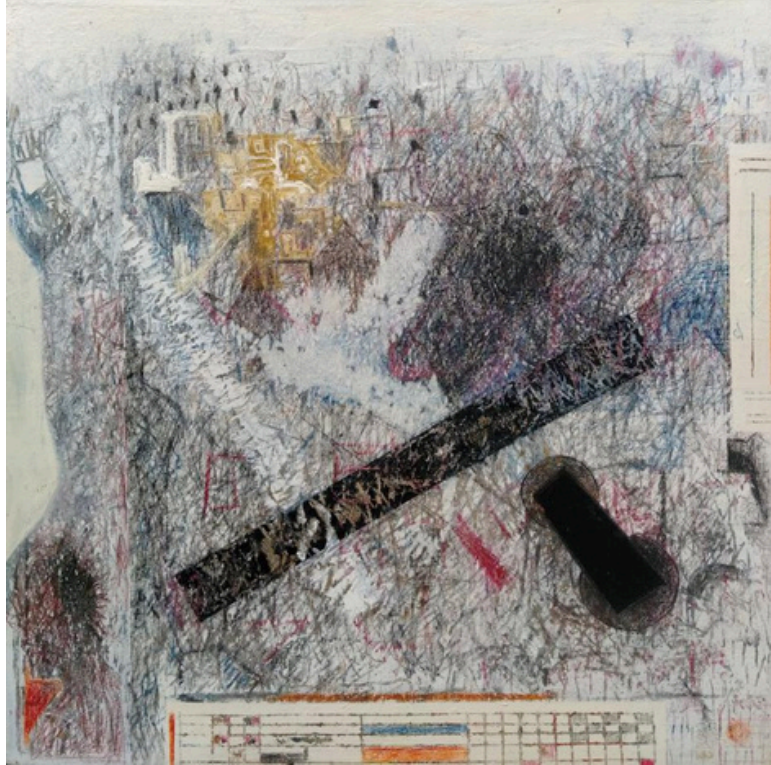
While working on the canvas, the artist frees their mind of materialistic thoughts, allowing for a self-generated, natural happiness that guides the viewer into the depths of abstract form. The use of unrestricted colors and lines creates new forms, leading both the artist and the audience toward an experience of endless and eternal pleasure.



NEERAJ YADAVA
CELEBRATION
18" X 18" INCHES (EACH)
MIXED MEDIA ON CANVAS



NEERAJ YADAVA
CELEBRATION
18" X 18" INCHES (EACH)
MIXED MEDIA ON CANVAS



NEERAJ YADAVA
CELEBRATION
18" X 18" INCHES (EACH)
MIXED MEDIA ON CANVAS



NEERAJ YADAVA
UNTITLED
12" X 12" INCHES (EACH)
MIXED MEDIA ON CANVAS



NEERAJ YADAVA
UNTITLED
12" X 12" INCHES (EACH)
MIXED MEDIA ON CANVAS



NEERAJ YADAVA
UNTITLED
12" X 12" INCHES (EACH)
MIXED MEDIA ON CANVAS

DNYANESHWAR RANDHAI

B 1991

B.F.A. Textile Design 2018 (Sir J.J. School of Art, Mumbai)

M.F.A. Textile Design 2020 (Sir J.J. school of art, Mumbai)

Lives and works in Nagpur-Maharashtra.

The artist Dnyaneshwar draws inspiration from both nature and spirituality, which guide his creative process. In his works, the cactus serves as a metaphor for human behavior. Their artistic journey is deeply rooted in dedication, which ultimately transforms into a form of meditation. This "cactus meditation" helps the artist connect with a higher realm. The cactus, a plant that controls its energy, symbolizes positivity for the artist, providing him with the same energy to grow. Similarly, his works radiate positivity, fueling his personal and artistic development.

For some, the cactus may seem positive, while for others, it may appear harmful due to its thorns. Dnyaneshwar relates this duality to his work, which may unknowingly please some viewers while disturbing others. He finds this contrast reflective of his own life, which, like the cactus, has both positive and challenging phases. The duality of life is a key source of inspiration for his work. In expressing these ideas, the artist enjoys working with a variety of mediums, including drawing, textiles, patterns, installations, painting, and printmaking, to convey the message with strength and depth.



DNYANESHWAR RANDHAI
UNTITLED
48" X 18" INCHES
TIE AND DYE ON SERIGRAPH



DNYANESHWAR RANDHAI
INSPIRATION
48" X 18" INCHES
TIE AND DYE ON SERIGRAPH

CHANDRAPAL PANJRE

B 1990

B.F.A (2016) and M.F.A (2018) Indira Kala Sangit Vishwavidyalaya, Khairagarh.

Lives and works Malanjkhand.

Chandrapal finds the process of creating artwork both joyful and meditative, a journey that mirrors inner exploration. His art embodies the rural lifestyle and culture, serving as a map of memories, silence, and peace—woven from life’s experiences. Inspired by the ancient tradition of Kantha stitching, where old fabrics are repurposed to create new forms, Chandrapal uses materials like sarees, dhotis, kurtas, scarves, and towels as his canvas. Layering between five and twelve pieces of both old and new cloth, he carefully hand-stitches each composition with needles, thread, and wool. This technique echoes the resourcefulness of rural life, where nothing goes to waste, and every material is given new purpose.

Through his work, Chandrapal celebrates the beauty found in simplicity, drawing inspiration from the world around him and expressing a deep reverence for living with limited means. His art speaks to the joy and fulfillment that come from making the most of what life offers, honoring the quiet elegance of a mindful, sustainable existence.



CHANDRAPAL PANJRE

UNTITLED 2024

36" X 48" INCHES

FABRIC STITCHING



CHANDRAPAL PANJRE

UNTITLED - 57, 2024

78" X 54" INCHES

FABRIC STITCHING

RAJ CHOWDHURY

B 1983

B.Tech in Information Technology from Bengal Engineering College.

Lives and works in Kolkata.

Raj Chowdhury's artwork vividly captures his adolescent passions, evolving from realism into the realms of surrealism and abstract realism. His recent paintings delve into Romanticism, drawing on his self-penned poetry to express his dreams and ideas. Through these artistic expressions, Raj champions women's empowerment, celebrates nature and love, and confronts violence, bigotry, and gender prejudice. Based in Kolkata, West Bengal, Raj sees art as a profound means of self-discovery and expression. It is through his creative journey that he seeks to define his existence and explore the concept of eternity. For Raj, art is not merely a passion or hobby but an essential aspect of his identity, a medium through which he navigates his own self.

Raj's artistic philosophy also reflects a deeper understanding of art's role in society. He believes that in dark times, art stands as a beacon of dignity for the individual and that it holds a critical place in opposing oppression and dictatorship. Art, for Raj, is a potent force that challenges oppressive regimes and embodies a greater humanity.



RAJ CHOWDHURY

RISING

42" X 66" INCHES

ACRYLIC , OIL BAR ON CANVAS



RAJ CHOWDHURY

TRIPTYCH, SMOKE AND RAIN

30" X 72" INCHES

ACRYLIC, OIL BAR ON CANVAS

KHANJAN MARU

B 1983

Diploma holder in Print Making, from MS University, Baroda.

Lives and works in Dubai.

The artist has built an impressive body of work and has received accolades such as the Lalit Kala Award: Gujarat State (Graphics) in both the Artist and Student categories. Her art has been showcased in numerous exhibits across India and the UAE, and it is part of various private collections. Her work serves as a reflection of her innermost feelings, acting as an extension of her emotions. When words fail her, her art takes center stage to convey her message. The concept of "Metamorphosis" forms the core of her creative journey. As humans, we are constantly evolving, and the artist believes that this process of change is the most fitting way to reach one's destiny. Her art expresses the importance of growing, maturing, and adapting to time, drawing from vivid life experiences. Her works capture the essence of transformation, portraying how we hold onto memories of the past while embracing new challenges. This metamorphosis, from the innocence of childhood to the wisdom of adulthood, is reflected in her creations. Through the ups and downs of life, the artist emphasizes the need for change in order to survive, an idea that resonates powerfully in her works.



KHANJAN MARU
BEYOND THE SURFACE
24" X 36" INCHES
PAPER RELIEF



KHANJAN MARU
SHADES OF SILENCE -3
22" X 30" INCHES
PAPER CARVING



KHANJAN MARU

UNTITLED - 1

7.5" X 11.5" INCHES (EACH)

PAPER CARVING



KHANJAN MARU

UNTITLED - 2

7.5" X 11.5" INCHES (EACH)

PAPER CARVING

KUMAR KRISHNA

B. 1988

Bachelor's in Visual Arts from kala bhavana.

Shantiniketan, West Bengal Master's from M.S. University, Baroda.

Lives and works in Jharkhand.

Krishna Kumar's journey with clay began in the simplest yet most profound way—through the innocent act of playing with mud as a child. The tactile joy of molding toys from the earth planted a deep-rooted love for the texture of clay within him. This early fascination blossomed into a full-fledged artistic pursuit during his bachelor's studies when he discovered the rich possibilities of ceramics. The technical challenges of the medium, from mastering the kiln to manipulating the clay's surface, ignited his creative spirit. Krishna embraced this complexity, diving into processes such as Raku, Obara, Crackle Raku, and smoke firing, each technique offering its own unpredictable beauty. His artistic curiosity led him to experiment with paper clay, blending it with coal to enhance its porosity. This innovative approach not only made the material lighter and less fragile but also introduced a new dimension to his work—one that merges tradition with experimentation. The transformation of such raw materials reflects his continuous search for balance between the natural properties of clay and his evolving artistic vision.

As a freelance ceramic practitioner, Krishna's work extends beyond his studio. He actively participates in workshops and camps, sharing his knowledge and gaining inspiration from collaborative environments. His experiences at the International Ceramic Symposium in Thailand, where he participated three times between 2018 and 2022, continue to shape his practice. These global interactions, combined with his hands-on engagement with the medium, fuel his desire to push the boundaries of ceramic art.



KUMAR KRISHNA
FINDING THE LANDSCAPE, 2024
14" X 3" X 12" INCHES
STONEWARE CERAMIC



KUMAR KRISHNA
UNTITLED, 2024
14" X 3" X 12" INCHES
STONEWARE CERAMIC



KUMAR KRISHNA
BLACK CLOUD, 2024
14" X 3" X 12" INCHES
STONEWARE CERAMIC



KUMAR KRISHNA
THE BLACK WAY, 2024
13" X 3" X 12" INCHES
STONEWARE CERAMIC



KUMAR KRISHNA
CONTINUES TARGET, 2024
12" X 3" X 12" INCHES
STONEWARE CERAMIC



FRONT VIEW



BACK VIEW

KUMAR KRISHNA
BLACK AMBASSADOR, 2022
16" X 5" X 14" INCHES
PAPER CLAY CERAMIC

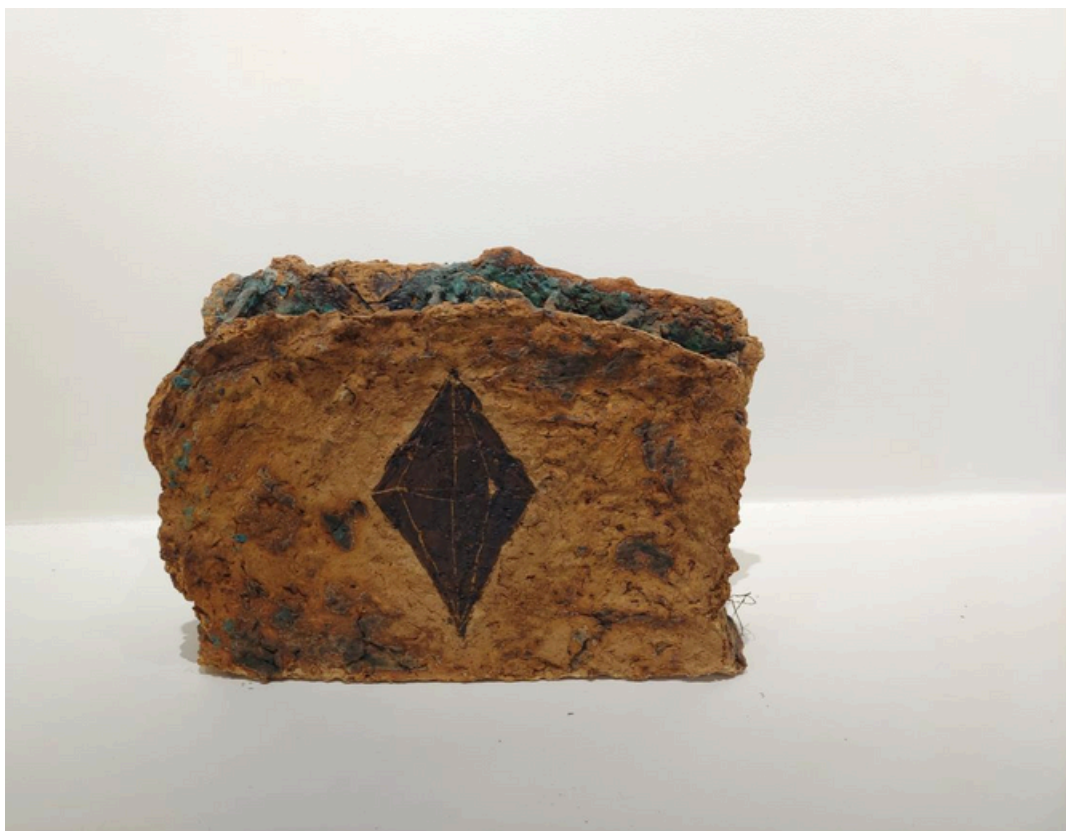


FRONT VIEW



BACK VIEW

KUMAR KRISHNA
COAL IMPRESSION, 2022
16" X 6" X 12" INCHES
PAPER CLAY CERAMIC



FRONT VIEW



BACK VIEW

KUMAR KRISHNA
BLACK DIAMOND GOD, 2022
16" X 5" X 14" INCHES
PAPER CLAY CERAMIC

SANGEETA KODIMYALA

B. 1978

MFA, S.N School of Arts & Communication, University of Hyderabad.

Lives and works Vizag and Hyderabad.

Sangeeta Kodimiyala's artistic journey, though rooted in childhood, took a detour through the world of technology. Born in Hanamkonda, Telangana, she initially pursued a career in Computer Engineering. However, a life-changing visit to the Vincent Van Gogh Art Museum in Amsterdam reignited her dormant passion for art. This pivotal moment led her to shift paths entirely, marking the beginning of her formal artistic exploration. In 2021, she earned a Bachelor of Fine Arts (BFA) from Andhra University, where her early work reflected the pressures of urbanization, global consumerism, and their psychological toll on individuals. Her pursuit of artistic expression deepened as she completed her Master of Fine Arts (MFA) at the University of Hyderabad in 2023.

Here, Sangeeta began to experiment with natural materials, transforming them into metaphors for silent resistance against growing consumerism. This shift in her practice highlighted her sensitivity to ecological concerns and the impact of material excess on both the environment and human consciousness. Sangeeta's work is a tapestry woven from her upbringing, deeply held family values, and an intimate connection to nature, poetry, and metaphysics. Each new medium she explores adds another layer to her ongoing journey of self-discovery. Through her evolving practice, she continues to engage with the world around her, striving to push the boundaries of artistic expression while staying true to her core inspirations..



SANGEETA KODIMYALA

METAMORPHOSIS 7

11.7" X 16.5" INCHES

EARTH PIGMENTS ON HANDMADE ACID FREE PAPER



SANGEETA KODIMYALA

METAMORPHOSIS 3

11.7" X 16.5" INCHES

EARTH PIGMENTS ON HANDMADE ACID FREE PAPER



SANGEETA KODIMYALA

METAMORPHOSIS 6

11.7" X 16.5" INCHES

EARTH PIGMENTS ON HANDMADE ACID FREE PAPER



SANGEETA KODIMYALA

METAMORPHOSIS 2

11.7" X 16.5" INCHES

EARTH PIGMENTS ON HANDMADE ACID FREE PAPER



SANGEETA KODIMYALA

METAMORPHOSIS 5

11.7" X 16.5" INCHES

EARTH PIGMENTS ON HANDMADE ACID FREE PAPER



SANGEETA KODIMYALA

METAMORPHOSIS 4

11.7" X 16.5" INCHES

EARTH PIGMENTS ON HANDMADE ACID FREE PAPER



SANGEETA KODIMYALA

METAMORPHOSIS 1

11.7" X 16.5" INCHES

EARTH PIGMENTS ON HANDMADE ACID FREE PAPER

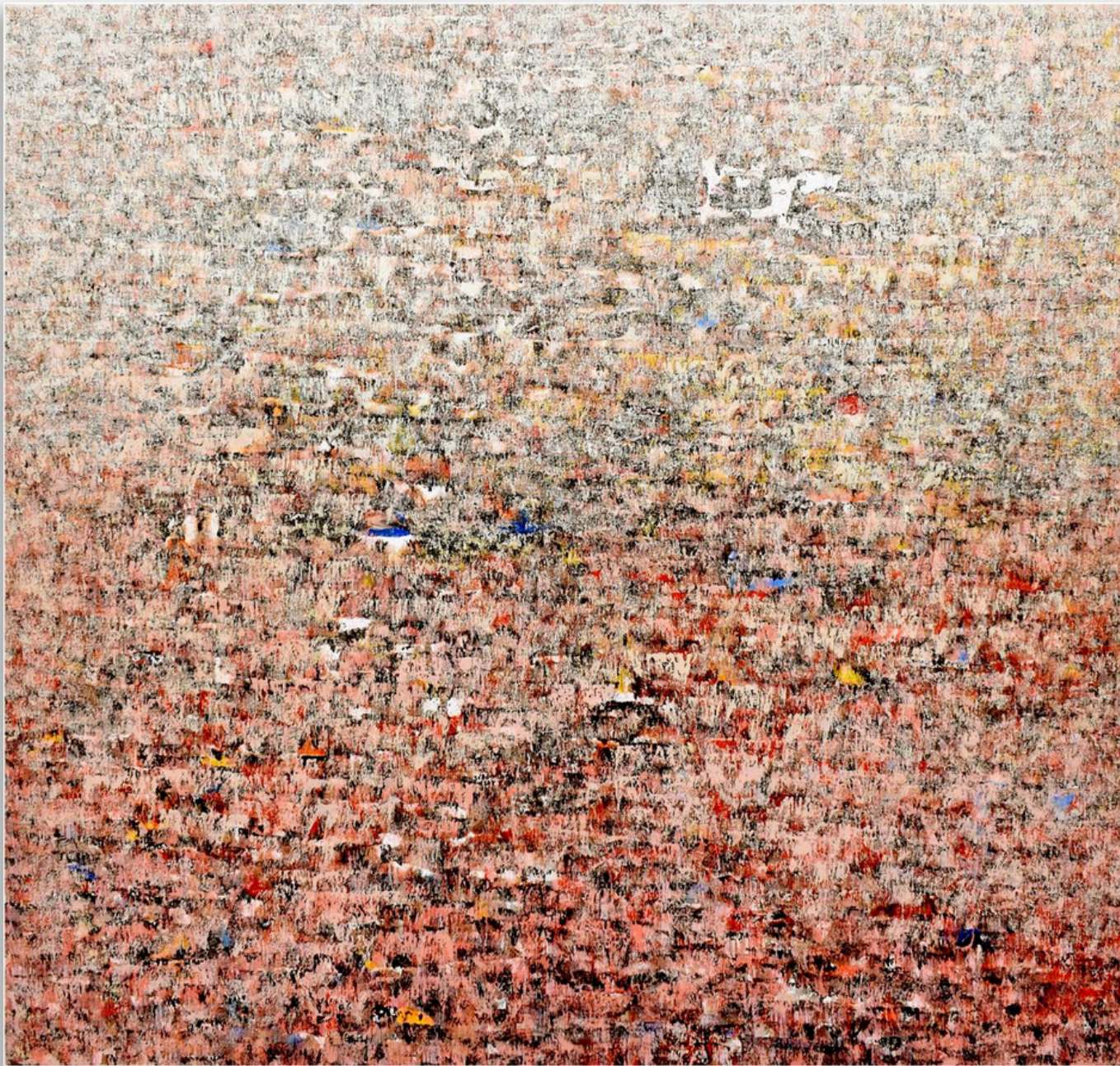
ANAND N. DABLI

B. 1979

G.D. Art (Drawing and Painting) Nagpur School of Art - 2007.

Lives and works in Nagpur.

Anand N. Dabli's paintings transcend the mere application of color, becoming a medium through which he connects with the unseen, unheard forces of nature. His works are not simply visual representations but an imagined world where nature's essence is magnified and experimented upon. Anand's approach goes beyond sensory beauty, exploring colors as fragmented, distorted particles. His art captures the full spectrum of nature's reality, blending texture, tone, lines, and shapes into intricate compositions that reflect both beauty and its antithesis, governed by the artist's sensitivity to time and space. Each painting is a deliberate attempt to express the unconscious through his profound relationship with nature. Anand's practice is not just artistic but spiritual, as painting has become a daily ritual—a vital process for his inner equilibrium. Yet, amidst the meditative immersion, there is an underlying sense of incompleteness, which he attributes to working in solitude. This feeling drives his ongoing creative exploration, where each stroke and texture connects him deeper with the organic world he portrays, even as it leaves him longing for more. With over a thousand paintings created, Anand continues to evolve as a freelance artist, carving out his own space in the abstract art world. While abstract artists around him speak in diverse visual languages, his approach remains distinct. He sees the process of drawing as foundational, a way to think through his subjects and narrate the language of nature. For Anand, the balance between color, texture, and form is essential—his unique expression of the natural world setting him apart within the vast landscape of abstraction.



ANAND N. DABLI
INWARD JOURNEY OF NATURE
36" X 36" INCHES
ACRYLIC ON CANVAS



ANAND N. DABLI
INWARD JOURNEY OF NATURE, 2024
48" X 48" INCHES
ACRYLIC ON CANVAS



ANAND N. DABLI
INWARD JOURNEY OF NATURE, 2024
48" X 48" INCHES
ACRYLIC ON CANVAS

SWEETA RAI

B. 1987

B.F.A , Kashi Vidya Peet, Banaras 2008, M.F.A , JJ School of Art, Mumbai 2011.

Lives and works in Delhi.

Sweeta Rai's "Chaotic Love" series immerses viewers in a world where love and chaos intertwine, creating an emotional landscape both mesmerizing and disorienting. Her paintings capture the paradox of romantic passion, where serenity and turbulence coexist, blending into one another. Through her vibrant use of color and thought-provoking forms, Sweeta portrays love not as a static or predictable force but as a dynamic, ever-shifting experience. Each brushstroke pulses with energy, reflecting the raw, often unpredictable essence of human connection. Her canvases become a stage where emotions ignite, burn, and transform, much like the fire that consumes the heart in the heat of love. The forms in her paintings evoke the discord and harmony of tangled emotions, illustrating how the overwhelming intensity of romantic entanglement can challenge expectations and provoke deep reflection. The bright colors and ethereal elements create a visual tension that mirrors the inner chaos lovers often experience.

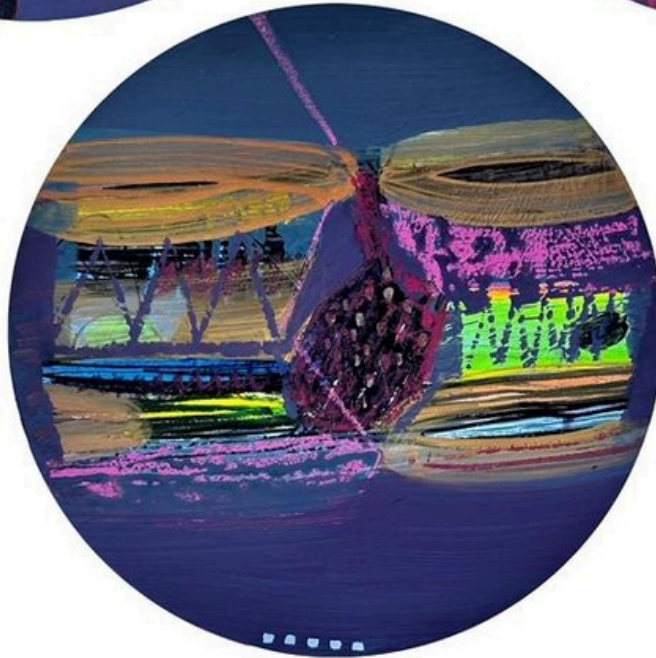
Sweeta's work invites viewers to reflect on their own emotional journeys, celebrating the beauty found in disorder and the complexity of human relationships. By disrupting the conventional narrative of romance as peaceful or serene, she challenges us to appreciate the multifaceted and often messy reality of love, where beauty thrives in the unexpected.



SWEETA RAI
CHAOTIC LOVE I
42" X 66" INCHES
MIXED MEDIA ON CANVAS



SWEETA RAI
CHAOTIC LOVE II
42" X 66" INCHES
MIXED MEDIA ON CANVAS



SWEETA RAI
LOVE IN CIRCLE
14" X 14" INCHES (EACH)
MIXED MEDIA ON CANVAS

YUVARAJ VELU

B. 1978

B.F.A in Sculpture, Government College of fine Arts, Chennai 2003.

Live and works in Chennai.

Yuvraj Velu's artistic journey is a celebration of material possibilities, where each medium holds untapped potential waiting to be realized. His ability to harmonize these materials with the concept of his sculptures is his true creative strength. While wood frequently becomes his medium of choice, the nature of his sculptures often demands a diverse range of materials. Yuvraj is driven by the physicality of creation, where processes such as cutting, pasting, grinding, breaking, and engraving are rhythmic acts that breathe life into his art. For him, each action is a dialogue between artist, material, and form. His sculptures, dynamic and textured, are shaped by the interplay of material and concept. Yuvraj allows the medium to guide the form, and the form, in turn, speaks back to the medium. Color, line, form, and texture converge to evoke a spectrum of emotions—where rough surfaces pulse with energy and movement, and smooth surfaces invite moments of calm. This contrast between the raw and refined becomes a powerful language in his work, drawing viewers into an experience that is both tactile and emotive.

Human connections deeply influence Yuvraj's artistic expression, with his sculptures often translating emotional bonds into physical forms. His final-year college exhibition was a transformative moment, unlocking a new confidence that propelled him into bold explorations of material and concept. For Yuvraj, creativity is not linear—it's an evolving web of experiences, informed by daily life and translated into the sculptural dialogue he shares with the world. His work leaves viewers with a sense of joy and fulfillment, a reflection of the emotions he cherishes as an artist.



YUVARAJ VELU
INTERGATED THOUGHTS
51" X 51" INCHES
VARIETY OF WOOD



YUVARAJ VELU
INTERGATED THOUGHTS
51" X 51" INCHES
VARIETY OF WOOD



YUVARAJ VELU

PUZZLE 2

50" X 50" INCHES

DIFFERENT WOOD, PLY WOOD

galleryVEDā

4/22 Rutland Gate 5th Street (1st floor), Nungambakkam | Chennai
Ph: 044 4309 0422 | info@galleryveda.com | www.galleryveda.com



ART EXHIBITION CURATED BY
ANNAPURNA M.
Ph: 90525 94901

PLEASE NOTE THAT ALL PRICES MENTIONED HERE
ARE EXCLUSIVE OF SALES TAX (GST 12%)

www.annapurnacurator.com